

UNIVERSITY OF CAMBRIDGE INTERNATIONAL EXAMINATIONS

GCE A Level

MARK SCHEME for the November 2005 question paper

9701 CHEMISTRY

9701/06

Paper 6

maximum raw mark 40

This mark scheme is published as an aid to teachers and students, to indicate the requirements of the examination. It shows the basis on which Examiners were initially instructed to award marks. It does not indicate the details of the discussions that took place at an Examiners' meeting before marking began. Any substantial changes to the mark scheme that arose from these discussions will be recorded in the published *Report on the Examination*.

All Examiners are instructed that alternative correct answers and unexpected approaches in candidates' scripts must be given marks that fairly reflect the relevant knowledge and skills demonstrated.

Mark schemes must be read in conjunction with the question papers and the *Report on the Examination*.

The minimum marks in these components needed for various grades were previously published with these mark schemes, but are now instead included in the Report on the Examination for this session.

- CIE will not enter into discussion or correspondence in connection with these mark schemes.

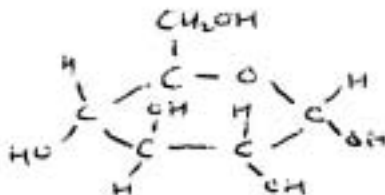
CIE is publishing the mark schemes for the November 2005 question papers for most IGCSE and GCE Advanced Level and Advanced Subsidiary Level syllabuses and some Ordinary Level syllabuses.



Page 1	Mark Scheme	Syllabus	Paper
	GCE A LEVEL – November 2005	9701	6

Biochemistry

1 (a) glucose



Needs to show ring structure and H or –OH [1]

(b) (i) $C_{12}H_{22}O_{11} + H_2O \rightarrow 2C_6H_{12}O_6$ [1]

(ii) Acid + water [1]

Boil/reflux [1]

Enzymes (allow named enzyme) [1]

15-45 °C [1]

(c) α - and β -pyranose (1-4 glucose) forms [1]
OR different optical isomerism at C₁

Both **C** and **D** are polymers OR polysaccharide [1]

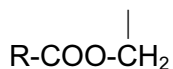
C is found in starch or glycogen (α -amylose), **D** is cellulose)

C is used for storage, **D** has use as a structural polymer)

4 x ½ and
round down

[2]

2 (a) (i) Alkene, carboxyl 2 x [1]



[1]

(b) (i) No. of moles of oleic acid in 1 g = $\frac{3.5 \times 10^{-3}}{3} = 1.17 \times 10^{-3}$ [1]

Hence M_r of oleic acid = 855 [1]

[Calculation from adding atoms = 884]

(ii) Energy store (allow insulation in cold climates, formation of lipids) [1]

Page 2	Mark Scheme	Syllabus	Paper
	GCE A LEVEL – November 2005	9701	6

(c) (i) Two of A, D, E, K 2 x [1]

(ii) **One of:**

A – oily fish, dairy products, carrots/fruit
 D – oily fish, milk, eggs (sunlight)
 E – green vegetables, vegetable oils
 K – brassicas, wholegrain cereals, egg yolk [1]

One of:

A – night blindness, dry eyes
 D – rickets, poor bone formation
 E – abnormal cellular membranes
 K – prolonged coagulation time in newborn infants [1]

Environmental Chemistry

3 (a) (i) Silicon/oxygen sheets are composed of tetrahedral [1]
 Aluminium/oxygen sheets are composed of octahedral [1]

(ii)

 <-----SiO₄ layer ----->

 <-----AlO₆ layer ----->

 <-----SiO₄ layer ----->

[1]

(iii) Any **two** points :

- Normal 2:1 clays have hydrogen bonds between layers
- On drying, hydrogen bonds between layers break
- This causes contraction and cracking, since layers are strong

[2 x [1]]

(b) Clays have a negative charge on their surface [1]

This is due to substitution of Si by Al (or Al by Mg) [1]

Plants may take K⁺ ions out of solution, these are replaced by ion-exchange from the clay/clays act as a reservoir of cations [1]

(c) Cation exchange could replace H⁺ ions with Cs⁺ ions [1]

Large Cs⁺ ions not easily displaced [1]

Page 3	Mark Scheme	Syllabus	Paper
	GCE A LEVEL – November 2005	9701	6

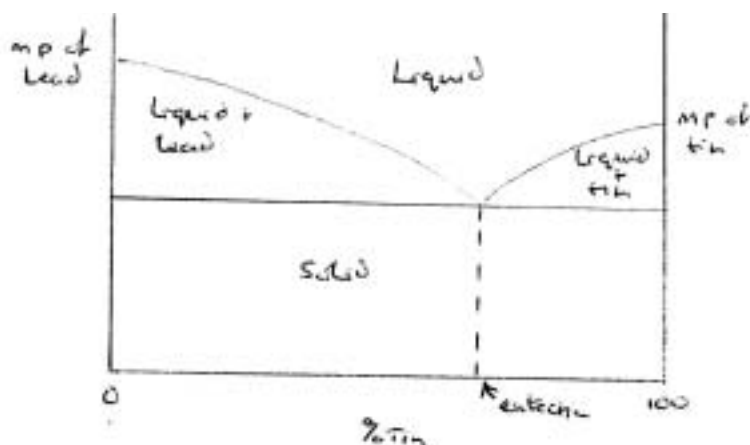
- 4 (a)** To absorb in the infra-red region of the spectrum a molecule must have a changing dipole [1]
Oxygen and nitrogen are symmetrical whereas methane and carbon dioxide possess changing dipoles [1]
- (b)** Cement manufacture [1]
 $\text{CaCO}_3 \rightarrow \text{CaO} + \text{CO}_2$ [1]
- (c) (i)** Carbon dioxide dissolves in cold oceans [1]
It establishes equilibria forming HCO_3^- and CO_3^{2-} ions (or equations) [1]
Some CO_2 is taken up by phytoplankton and enters the food chain [1]
Some CO_3^{2-} ions react with Ca^{2+} ions to form insoluble CaCO_3 [1]
- (ii)** Oceans 'store heat' helping maintain global temperatures [1]
Oceans affect weather patterns, particularly wind and rainfall [1]
Transfers energy from one region to another via the Water Cycle [1]

[Max 6]

Phase Equilibria

- 5 (a)** Allow : column containing stationary phase [1]
liquid under high pressure (mobile phase) [1]
detector/recorder [1]
- (b) (i)** It is in order of the components leaving the column [1]
- (ii)** The strength of bonds formed with the stationary phase [1]
The M_r of the component [1]
- (iii)** Area under peak **A** = $6 \times 40/2$ = 120
Area under peak **B** = $6 \times 10/2$ = 30
Area under peak **C** = $10 \times 30/2$ = 150 [1]
Total area = 300 units hence **A** = 40%, **B** = 10% and **C** = 50% [1]
- (iv)** The alcohol would take longer to be eluted [1]
It would form stronger H-bonds with the stationary phase [1]

6 (a)



Axes (1)
 m.p.'s (1)
 eutectic (1)
 3 areas (1)

[4]

- (b) (i) Alloy has a lower m.p.
 Plumber's solder solidifies over a range
 Electrician's solder has a sharp m.p. (f.p.)
 Alloy is stronger than metals
 Melting point can be varied by changing composition

Any 3 points

- (ii) Hardness/durability/resistance to wear
 Colour can be varied by composition
 Resistance to corrosion
 Difficult to forge

Any 3 points

[6]

Spectroscopy

- 7 (a) (i) ^{13}C
 (ii) ^{81}Br
 (iii) Two ^{81}Br atoms in molecule

3 x [1]

- (b) M+2 : M+4 ratio would be 2 : 1

[1]

^{79}Br and ^{81}Br are present in equal proportions in bromine, there are two ways of producing M+2, but only one of producing M+4

[1]

- (c) (i) Hydrolyse the ester
 Analyse the products and look for the molecule containing ^{18}O

[1]

[1]

Page 5	Mark Scheme	Syllabus	Paper
	GCE A LEVEL – November 2005	9701	6

(ii) Place the pure ester in the mass spectrometer and examine the fragmentation pattern [1]

Look for a fragment with a mass two units more than the corresponding unlabelled fragment. [1]

If it is at m/e 59 then structure **K** is correct (or if at m/e 33, structure **L**) [1]

8 (a) Bending (1) and stretching (1) frequencies of bonds in the molecule are in this region of the spectrum [2]

(b) Although plastics contain mainly carbon and hydrogen, different plastics contain different (functional) groups [1]

Bonds in the groups absorb in different regions of the spectrum [1]

(c) **P** – 700 cm^{-1} caused by C-Cl ; plastic is pvc [2 x 1]

Q – 3300 cm^{-1} caused by N-H ; plastic is nylon/polyamide [2 x 1]

R – 1750 cm^{-1} caused by C=O ; plastic is *Terylene*/polyester
OR 1150 cm^{-1} [2 x 1]

Transition Elements

9 (a) (i) impure nickel heated with CO at $50\text{ }^{\circ}\text{C}$ /low temp [1]
 $\text{Ni(s)} + 4\text{CO(g)} \rightleftharpoons \text{Ni(CO)}_4\text{(l)}$

then the carbonyl is decomposed by heating to $>200\text{ }^{\circ}\text{C}$ [1]

$\text{Ni(CO)}_4\text{(l)} \rightleftharpoons \text{Ni(s)} + 4\text{CO(g)}$ (both equations) [1]

The CO is recycled. [1]

(ii) anode: $\text{Ni(s)} - 2\text{e}^- \longrightarrow \text{Ni}^{2+}\text{(aq)}$
cathode: $\text{Ni}^{2+}\text{(aq)} + 2\text{e}^- \longrightarrow \text{Ni(s)}$ (both) [1]

copper too unreactive to dissolve at anode
OR $\text{Cu}^{2+}/\text{Cu} = 0.34\text{V}$ whereas $\text{Ni}^{2+}/\text{Ni} = -0.25\text{V}$ [1]

so the copper falls to the bottom as “anode sludge” [1]

Page 6	Mark Scheme	Syllabus	Paper
	GCE A LEVEL – November 2005	9701	6

- (b) $[\text{Ni}(\text{H}_2\text{O})_2(\text{NH}_3)_4]^{2+}$ is octahedral: cis-trans isomers [1]
 diagrams of the two isomers [1]
 $[\text{Ni}(\text{CN})_2(\text{R}_3\text{P})_2]$ must be tetrahedral [i.e. NOT square planar] as only one isomer [1]
- 10 (a) Paramagnetism is due to the presence of unpaired electrons. [1]
 Fe^{2+} is d^6 , hence 4 unpaired electrons (assume high spin)
 Fe^{3+} is d^5 , hence 5 unpaired electrons (assume high spin) [1]
 Hence Fe^{3+} is the more paramagnetic [1]
- (b) Add $\text{SCN}^-(\text{aq})$ [1]
 If Fe^{3+} present, a blood red colouration [1]
 Add $[\text{Fe}(\text{CN})_6]^{3-}(\text{aq})$ [1]
 If Fe^{2+} present, a deep blue colour/ppte [1]
- (c) (i) $\text{S}_2\text{O}_8^{2-} + 2\text{I}^- \longrightarrow 2\text{SO}_4^{2-} + \text{I}_2$ [1]
 (ii) Fe^{3+} is a homogeneous catalyst [1]
 E° of $+0.77\text{V}$ is lower than that for $\text{S}_2\text{O}_8^{2-}/\text{SO}_4^{2-}$ but higher than that for I_2/I^- [1]
 $2\text{I}^- + 2\text{Fe}^{3+} \longrightarrow \text{I}_2 + 2\text{Fe}^{2+}$
 $\text{S}_2\text{O}_8^{2-} + 2\text{Fe}^{2+} \longrightarrow 2\text{SO}_4^{2-} + 2\text{Fe}^{3+}$ (both) [1]

[4 max 3]